

Containment Solution Overview

Introduction

Data Center Containment is the key to optimizing and enhancing the performance of your data center infrastructure. In today's fast-paced digital landscape, effective containment solutions are essential for maintaining temperature control, energy efficiency, and overall system reliability.

Containment Benefits



Temperature Control

Containment minimizes hot and cold air mixing, ensuring precise temperature control and preventing hotspots.



Energy Efficiency

By directing airflow, containment reduces the workload on cooling systems, leading to significant energy savings.



Optimized Cooling

Containment maximizes the effectiveness of cooling systems, promoting a more sustainable and cost-efficient operation.



Equipment Longevity

Consistent and controlled environmental conditions extend the lifespan of data center equipment.

Product Application



Data Center



High-Density Application



Colocation



Energy Rebate Program



Hyperscale

Choose Us, Choose More Options

Selecting our containment solutions means choosing a partner dedicated to providing a wide array of options for your data center needs. Enjoy the benefits of efficient cooling, energy savings, and a tailored solution that evolves with your infrastructure.

For inquiries and consultation, contact sales@inovadc.com

Inova Containment Components

01. Row End Sliding Door

02. Tilt Window

03. Shrink Panels

04. Simple Flat Panels

05. Louvers Panels

06. Accessories



Row End Sliding Door

Inova Row End Sliding Door, a robust, pre-assembled dual sliding door that ensures fast installation with a no-threshold design to prevent tripping. Equipped with efficient perimeter compression gaskets, it minimizes air leakage, and its auto-hold and auto-close features provide added convenience. You can tailor the closing speed and force, choose from various color and material options, and customize the size to perfectly suit your needs, making it the ideal choice for safety and efficiency in your data center or facility.



PRODUCT FEATURES

- Robust and quality design
- Pre-assembled dual sliding door, fast installation
- No threshold design prevents tripping
- Perimeter compression gaskets efficiently seal and minimize air leakage
- Auto hold when doors fully open and auto close when doors are not fully open
- Adjustable door closing speed and force
- Color and material options
- Customizable size
- Customizable single sliding door

PRODUCT SPECIFICATIONS

Height	86.4 in (2195 mm) fits 42U, 45U, 48U, 52U
Width	60.1 in (1526 mm) fits 4' (1200 mm) aisle 83.9 in (2131 mm) fits 6' (1800 mm) aisle
Thickness	5.12 in (130 mm)
Material	Frame - Carbon Steel, Panel - Polycarbonate
Weight	198.4 lb (90 kg)/ 264.6 lb (120 kg)
Shipping Dimensions	90.6 in (2300 mm)x 60.4 in (1535 mm)x18.1 in (460 mm) 90.7 in (2305 mm)x 85.9 in (2183 mm)x 18.9 in (480 mm)
Shipping Weight	2 pcs in one crate, 551.2 lb (250 kg)/ 740.8 lb (336 kg)
Panel Option	Twin wall polycarbonate panel (UL94-HB or E84) Solid polycarbonate panel (UL94-V0)
Color	Default - Grey RAL7035; Optional - Black RAL9005 & White RAL9003
Cycle Times	10000
Function	Manually open, automatically close, fully open hold





Tilt Window



Tilt Window, a pivotal element in our advanced containment solutions for cold aisle configurations. Engineered for ultimate safety, this innovative roof system swiftly responds to fire signals by tilting open, allowing seamless dispersion of fire suppressants into the aisle. Elevate your datacenter safety standards with Inova Tilt Window, where intelligent engineering meets effective fire containment.

PRODUCT FEATURES

- Robust and quality design
- DC electromagnetic control can be easily connected and integrated to BMS
- Can be reset after opening
- LED installation position and camera installation position reserved
- Distribution box with dual power supplies and backup power supply to prevent accidental opening

PRODUCT SPECIFICATIONS

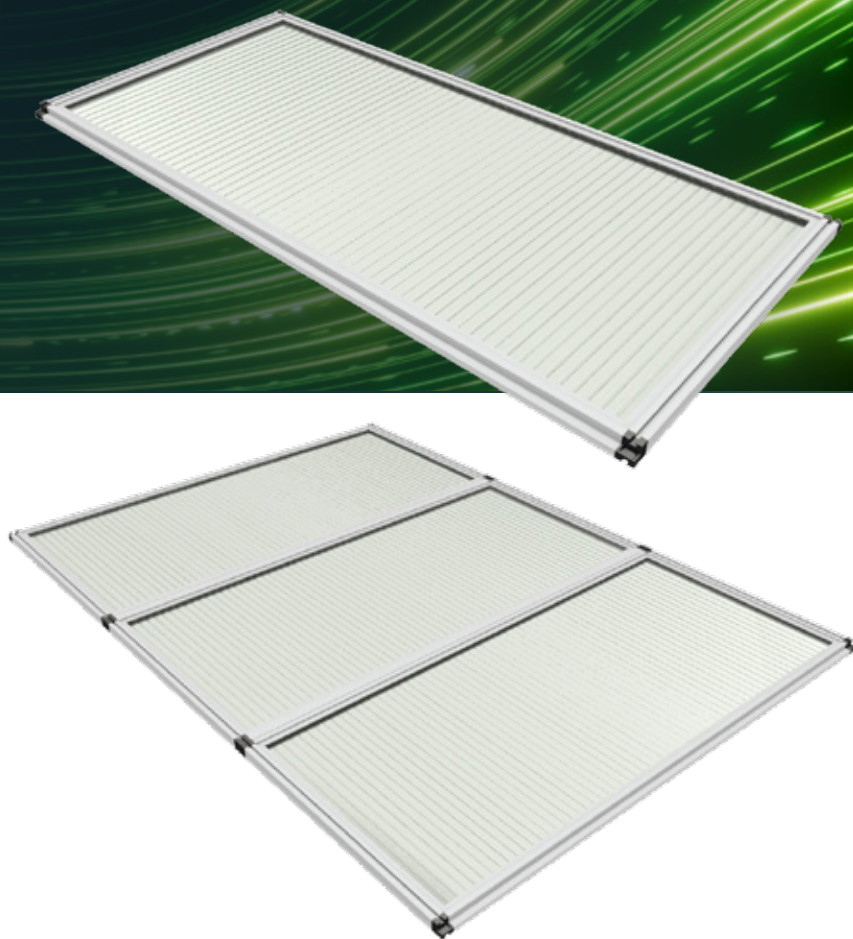
Dimensions	Width: 23.6 in (600 mm) or 31.5 in (800 mm)
	Thickness: 2.99 in (76 mm)
	Length: 54.1 in (1374 mm) fits 47.2 in (1200 mm) or 4' aisle 71.9 in (1827 mm) fits 70.87 in (1800 mm) or 6' aisle
Material	Frame - Carbon Steel
	Panel - Aluminum Alloy And Polycarbonate
Weight	28.66 lb (13 kg) - 40.79 lb (18.5 kg)
Color	Default - Grey RAL7035; Optional - Black RAL9005 & White RAL9003
Voltage	Input - 24V DC
Panel Fire Rating	UL94-HB or UL94-V0
Function	Fire alarm signal trigger power on/off
	Window open when power off
	Window close by manual





Shrink Panels

The Shrink Panel, a pivotal component of our containment solutions tailored for cold aisle or hot aisle configurations, boasts a design that prioritizes safety and rapid fire response. In the event of a fire, the specialized panels contract and release, allowing fire suppression liquids or gases to seamlessly permeate the aisle. Choose the Shrink Panel for a cost-effective and intelligent solution that enhances datacenter safety standards.



PRODUCT FEATURES

- Thermoplastic material: contracts and drops in the event of a fire
- Cost-effective solution
- Fast installation, no wiring required, simple and convenient
- Panel material meet E84 Class A flaming

PRODUCT SPECIFICATIONS

Dimensions	Width: 24 in (610 mm)
	Thickness: 1.02 in (26 mm)
	Length: 49.6 in (1260 mm) fits 47.24 in (1200 mm) or 4' aisle 73.6 in (1870 mm) fits 70.87 in (1800 mm) or 6' aisle
Material	Frame - Aluminum Alloy
	Panel - Rigid Vinyl
Weight	6.6 lb (3 kg)/ 8.82 lb (4 kg)
Fire Rating	E84 Class A
Function	Shrink and drop when fire happens



Simple Flat Panel

Simple Flat Panel is a versatile solution designed for optimal placement at the top of cold aisles or as vertical duct panels in hot aisles or as an infill panel between cabinets, effectively isolating and managing airflow. This straightforward yet highly effective panel ensures efficient climate control within your datacenter, contributing to a seamless and optimized operational environment.



PRODUCT FEATURES

- Cost-effective solution
- Fast installation, no wiring required, simple and convenient
- Light weight option

PRODUCT SPECIFICATIONS

Dimensions	Width: 24.0 in (610 mm) or custom
	Thickness: 1.02 in (26 mm)
	Length: 49.61 in (1260 mm) fits 47.24 in (1200 mm) or 4' aisle 73.62 in (1870 mm) fits 70.87 in (1800 mm) or 6' aisle Or custom
Material	Frame - Aluminum alloy
	Panel - Polycarbonate
Weight	6.61 lb (3 kg)/ 11.02 lb (5 kg)
Fire Rating	E84 Class A, UL94-V0
Function	Isolation the cold and hot air



Louver Panel

The Louver Panel is a solution for enclosing hot aisles, skillfully managing the separation of cold and hot airflow. Designed for versatility, it not only ensures effective climate control but also exhibits a smart response to fire emergencies. In the event of a fire, the Louver Panel opens, allowing seamless entry for firefighting gases or liquids into the aisle. Elevate your datacenter safety and thermal management with the Louver Panel's dual functionality.



PRODUCT FEATURES

- Unique design
- DC electromagnetic control can be easily connected and integrated to BMS
- Can be reset after opening
- Can be instead of simple flat panels
- Distribution box with dual power supplies and backup power supplies to prevent accidental opening

PRODUCT SPECIFICATIONS

Dimensions	Width: 46.85 in (1190 mm)
	Thickness: 3.64 in (92.5 mm)
	Length: 43.3 in (1100 mm)
Material	CRS
Weight	59.52 lb (27 kg)
Color	Default - Grey RAL7035; Optional - Black RAL9005 & White RAL9003
Voltage	Input - 24V DC
Function	Fire alarm signal trigger power on/off
	Window open when power off
	Window close by manual



ACCESSORIES

Accessories are integral components of our containment solutions. We offer a variety of sealing elements to fill gaps of different sizes in various locations. Additionally, our wide range of options include lighting system options and a power control system, providing electrical and automation capabilities for a comprehensive solution.

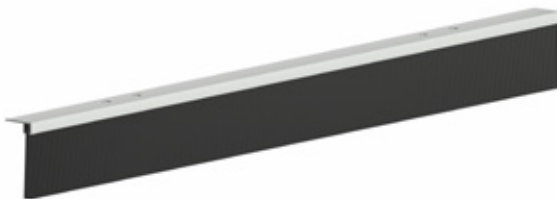
AIRFLOW SEALING GASKET



Rack level blanking panel



Meganet filler panel between rack bottom and floor

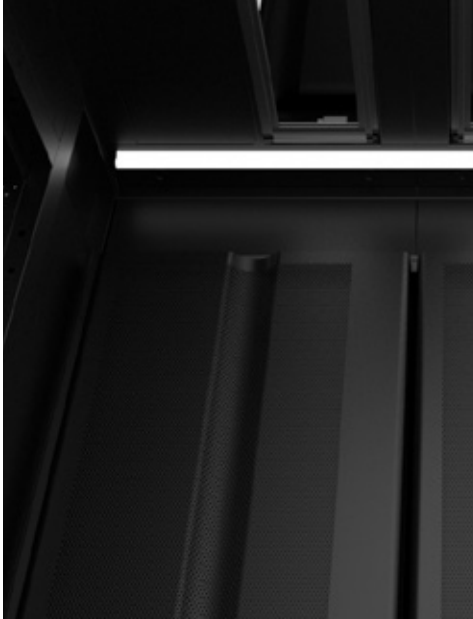
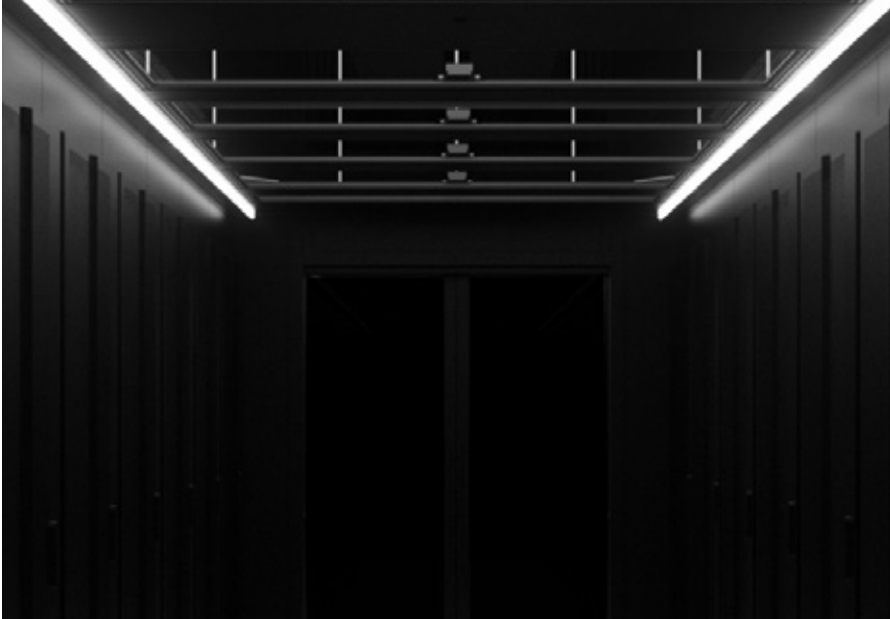


Brush kit for 20 - 100 mm gap



Brush strip for gap less than 10 mm

LIGHTING SYSTEM

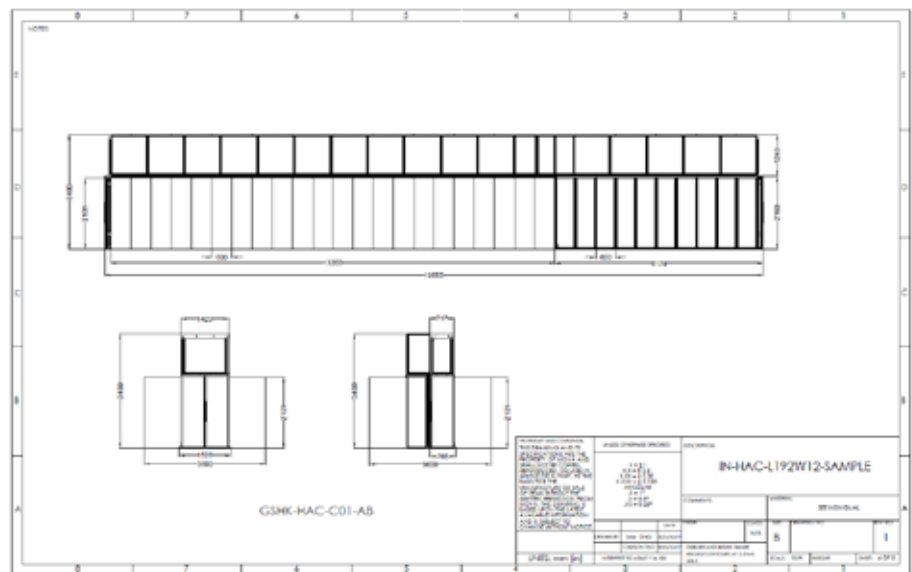
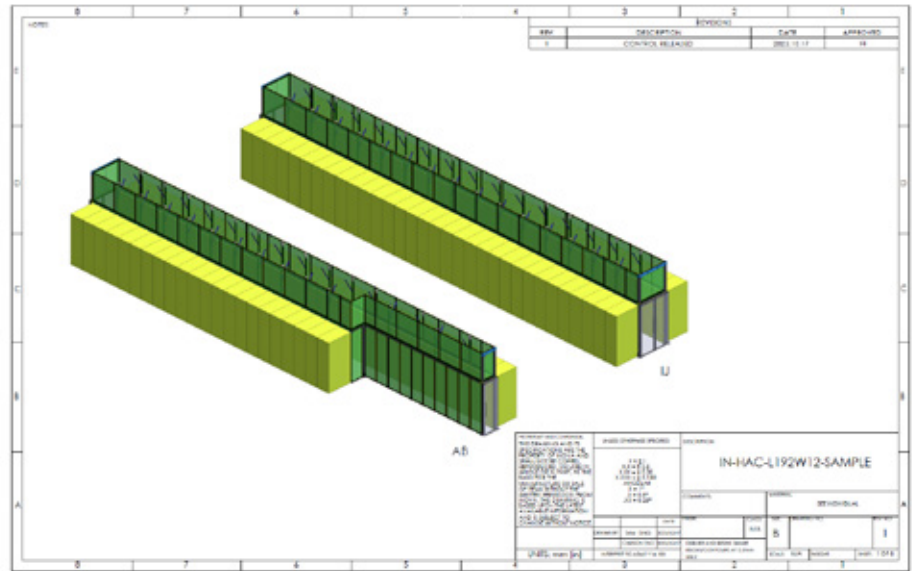


POWER CONTROL BOX



SERVICE

We deliver comprehensive services, including professional on-site surveys, material fire code compliance, model simulations, shop drawings, and expert installation. Our commitment is to provide end-to-end solutions tailored to your needs.





Choose Us, Choose More Options

Selecting our containment solutions means choosing a partner dedicated to providing a wide array of options for your data center needs. Enjoy the benefits of efficient cooling, energy savings, and a tailored solution that evolves with your infrastructure.

For inquiries and consultation, contact sales@inovadc.com