



AI Ready Rack

AI Ready Rack was designed for the demand of the AI era. With high load capacity, ample space, ultimate triple point locking solution, millions of configurable options, optimized airflow, cable management features, and extension adaptor for liquid cooling, it stands as the ultimate choice in the modern data center and the age of AI.

PRODUCT KEY FEATURES

01. Flexible Configuration

With a modular design, our AI Ready Rack facilitates easy configuration and expansion in wiring, airflow management, and integration of liquid cooling manifolds.

02. Fortified Door System

Enhanced door locking system featuring a three-point locking mechanism, significantly boosting cabinet security.

03. Resilient Construction

Capable of supporting static loads exceeding 4400 lb (2000 kg) and dynamic loads of up to 3300 lb (1500 kg), the AI Ready Rack also offers optional shock packaging 3000 lb (1360 kg) for rack-and-stack and rack-and-roll deployments.

04. Expansive Internal Usable Space

Unlock expanded internal space in both width and depth dimensions. The increased depth allows for accommodating servers exceeding 35.4 in (900) mm in length and supports the installation of up to four PDUs. The widened space streamlines wiring procedures and enhances the convenience of server maintenance operations.

05. Efficient Airflow Management

Grommet allows cable passthrough while improving heat dissipation efficiency, an optional air dam kit seals gaps around the perimeter of the front mounting rails.

06. Standard Extension Frame for Liquid Cooling Application

Supporting the installation of liquid-cooled servers, the extension frames enable mounting onto manifolds inside and through the whole liquid cooling system to achieve higher heat dissipation power.



APPLICATION ENVIRONMENT

- Cloud and service providers
- Colocation
- Small, medium, and large data centers
- Enterprise edge computing
- AI, large-scale model training, and machine learning





- Innovative Frame**
 Static Loading = 4400 lb (2000 kg)
 Dynamic Loading = 3300 lb (1500 kg)
 Shock Packing Loading = 3000 lb (1360 kg)
 600, 800 mm widths, 1000, 1100, 1200 mm depth,
 200 mm depth with extension frame.
- Adjustable Mounting Rail**
 Equipment mounting rails can be adjusted forward and backward to choose a satisfactory position. The mini. moving distance of mounting rail is 0.5 in (12.7 mm).
- Heavy-Duty Casters and Leveling Feet**
 Four heavy-duty swivel casters come standard with AI Ready Rack, providing easy transport when not on leveling feet.
- Bond Grounding**
 All components of the cabinet are uniformly grounded, ensuring optimal safety and protection against electrical hazards. This comprehensive grounding enhances system reliability and minimizes the risk of electrical faults.
- Color Options**
 Grey, black and white are standard, other colors are optional.
- Front-to-Rear Cable Trough**
 The front-to-rear side cable trough provides a dedicated cable pathway through openings on the mounting rails in 31.5 in (800 mm) wide cabinets.
- Vertical Cable Managers**
 The light version of our vertical cable managers, available in both short and long finger styles, offers effortless installation and removal. Our standard lashing panels provide versatile cable routing, tying, and PDU hanging capabilities. For professional-grade cable management, our premium version includes a finger-style cable manager, lashing panel, and two hinge covers, ensuring comprehensive organization and ease of use.
- Air Dam Kit**
 Maximize the heat dissipation efficiency with an optional air dam kit that seals gaps around the perimeter of the front mounting rails.
- Reversible Doors with Optimized Airflow**
 The high-quality, hexagonal perforated front and split rear doors feature an 80% maximized airflow. The quick release hinges allow for easy door removal and reversibility.

Cable Openings
 Brush-sealed cable openings on the top panel, grommets on the mounting rail (only for 800mm cabinet) and brush-sealing or grommets on the side panels provide easy cable passthrough while maintaining optimal airflow.

Lockable Side Panels
 Two-piece side panels allow easier handling and provide quick access to equipment and cables.

Multiple Door Lock Options

Keep your cabinets secure with your choice of a premium swing handle with key entry, combination or electronic door locks.

Fortified Door Lock System

Enhanced door locking system featuring a three-point locking mechanism, significantly boosting cabinet security.

Certifications

UL Standards	UL60950 Listed
Protection Rating	IP20
Specification	EIA-310E
Compliance	RoHS



Use the Part Number Matrix below to build out your AI Ready Rack configuration

AIR	8	A	3	-	D	K	T	2	0	W	1	C	C	D	D	1
Prefix	Width	Depth	Height		Doors	Locks	Top Panel	Side Panel	Special Structure Parts	Color	Airflow Mgmt	**VCM -FL	**VCM -FR	**VCM -RL	**VCM -RR	Packaging

Width		
mm	in	value
600	23.6	6
800	31.5	8

Depth (frame)		
mm	in	value
1000	39.4	A
1100	43.3	B
1200	47.2	C
&1400	55.1	E

Height			
mm	in	RU	value
2002	78.8	42	3
2136	84.1	45	6
2269	89.4	48	9
2447	96.3	52	C

Doors	
Configuration	value
None	0
Single Perf Front/ Split Perf Rear	D
No Front/ Split Perf Rear	E
Single Perf/ No Rear	H

Locks	
Configuration	value
None	0
Keyed	K
Combination	M

Top Panel	
Configuration	value
None	0
Full-Depth,Brush-Sealed Openings	T

Vert. Cbl. Mgmt, Rear-Right	
value	Configuration
0	None
A	Short Finger, Light
B	Long Finger, Light
C	*Short Finger, Pro
D	*Long Finger, Pro
E	Narrow Lashing Panel, Standard
F	Wide Lashing Panel, Standard

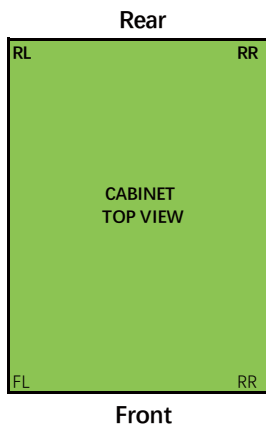
Airflow Management	
value	Configuration
0	No Air Dam, No Bottom Panel
1	^Air Dam Only
2	^^Air Dam and ^^Bottom Panel

Color	
value	Configuration
B	Black
W	White
G	Grey

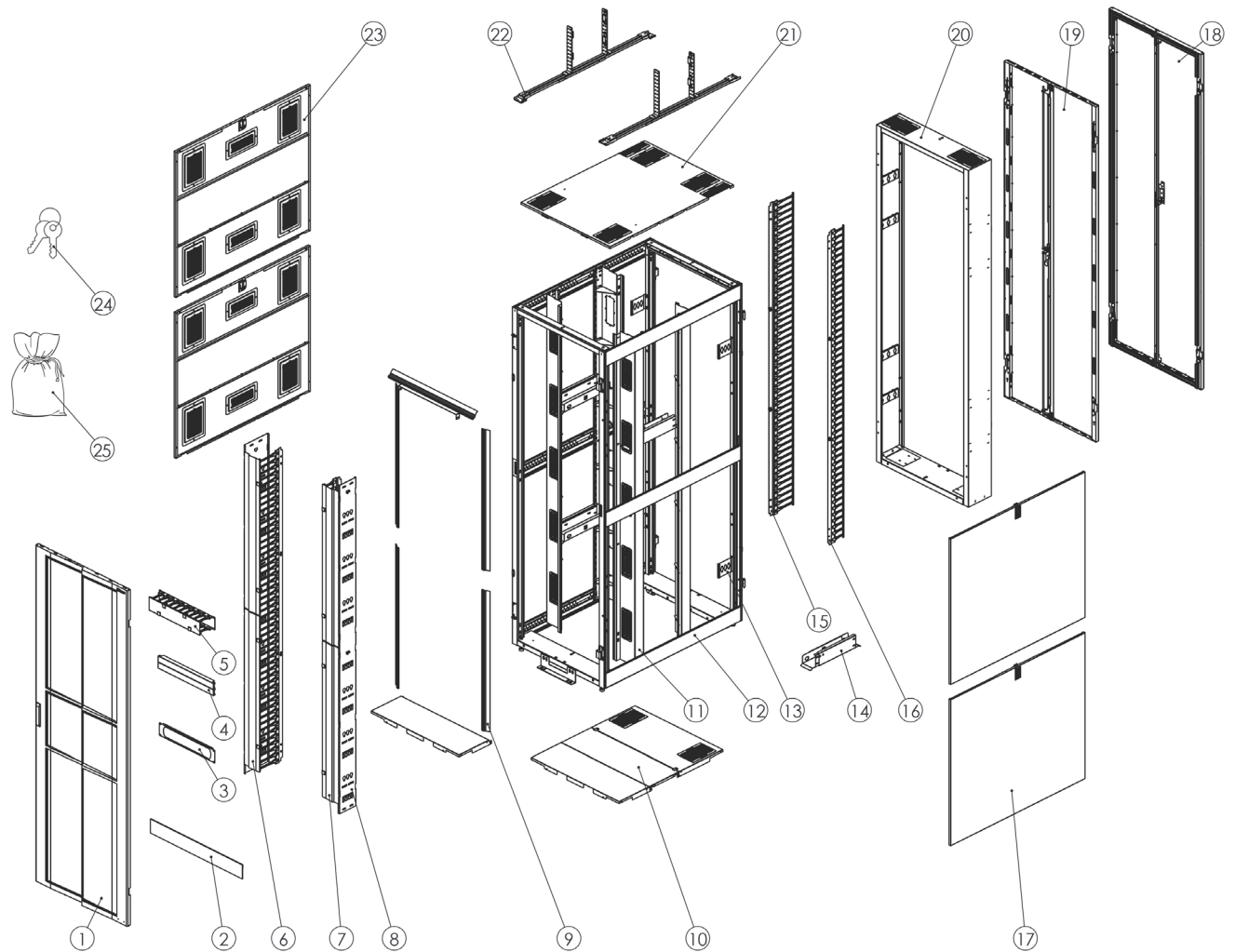
Special Structure Parts	
value	Configuration
0	None
2	*Side Trough *2
4	*Side Trough *4
6	*Side Trough *6

Side Panel	
value	Configuration
0	None
1	1 Flat Side Panel
2	2 Flat Side Panels
3	1 Brush Side Panel
4	2 Brush Side Panels

Shipping	
value	Configuration
1	Standard Pallet
2	Shock Pallet



Notes	
Character Count = 19	
&1400: Standard 1200mm frame with 200mm extension frame.	
*Not compatible with 600mm frame width	
**Vertical Cable Manager (VCM); light = fingers only;pro = fingers, hinged cover, lashing panel;	
^ Air Dam: Top Seal Gasket, Side Seal Gasket, Half Bottom.	
^^ Bottom Panel:Rear half bottom panel, must use with Air Dam.	



1	Single Perf Front Door	14	Side Cable Manager
2	Vent Skirt	15	Vertical Cable Manager Light, Long Finger
3	Brush Blanking Panel	16	Vertical Cable Manager Light, Short Finger
4	Blanking Panel	17	Side Panel
5	Horizontal Cable Manager	18	Solid Sealed Rear Doors
6	Vertical Cable Manager Pro, Long/ Short Finger	19	Split Perf Rear Doors
7	Cover, part of Vertical Cable Manager Pro	20	Extended Frame
8	Narrow/ Wide Lashing Panel, Vertical Cable Manager Standard. Also, part of Vertical Cable Manager Pro	21	Full-depth Brush-sealed Top Panel
9	Air Dam Kit	22	Cable Ladder Support Kit
10	Bottom Panel	23	Brush Side Panel
11	Mounting Rail Kit	24	Keys
12	Frame	25	Cloth Bag (50 sets of cage nuts)
13	PDU Short Bracket		

Height Options - in (mm)	
in	mm
23.6	600
27.6	700
31.5	800

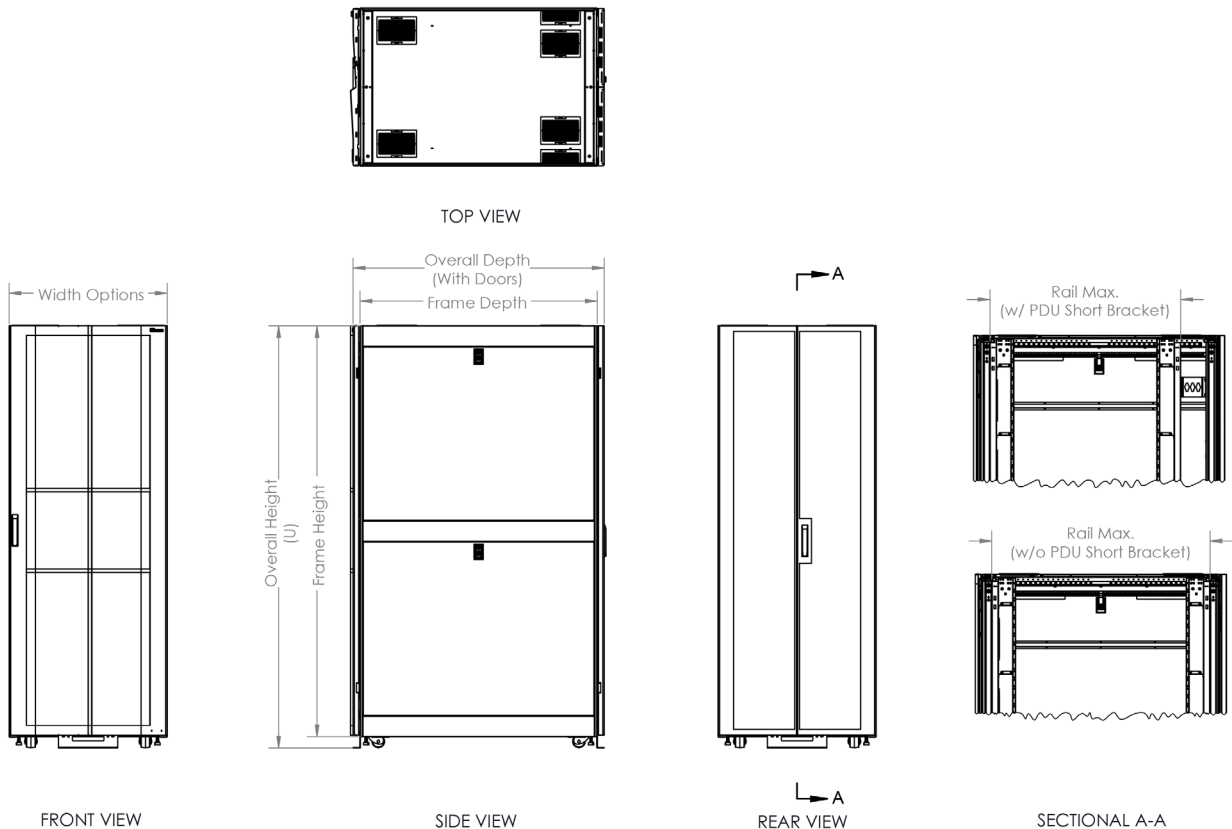
Height Options - in (mm)		
RU	* Overall Height	Frame Height
42	78.8 (2002)	76.6 (1945)
45	84.1 (2136)	81.9 (2079)
48	89.4 (2269)	87.1 (2212)
52	96.3 (2447)	94.1 (2390)

* Overall height measurements include casters and leveling feet.

Depth Options - in (mm)			
Frame Depth	Overall Depth (With Doors)	** Rail Max. (w/ PDU Short Bracket)	Rail Max. (w/o PDU Short Bracket)
39.4 (1000)	42.2 (1071)	30.0 (762.0)	35.5 (901.7)
43.3 (1100)	46.1 (1171)	34.0 (863.6)	39.5 (1003.3)
47.2 (1200)	50.0 (1271)	38.0 (965.2)	43.5 (1104.9)
55.1 (1400)	57.9 (1471)	38.0 (965.2)	43.5 (1104.9)

** When adjusted to rail max., cable managers cannot be attached to rails.
 At the rail max., 2 PDUs can be installed on one side. And 4 PDUs can be installed on one side for 1400mm.
 The default rail to rail distance is 29.5".

DIMENSION DRAWINGS



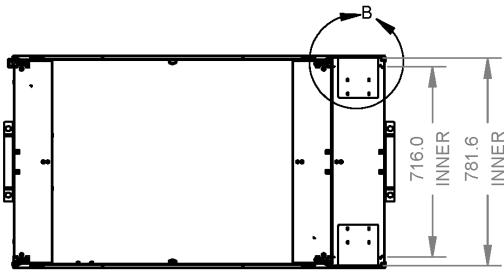
The Extension Frame increases cabinet space, allowing for AI server configurations while providing room for additional PDU and direct-to-chip liquid cooling accessories. This enables optimal utilization of space for enhanced efficiency and flexibility in data center environments.

- Increase 200 mm space in depth
- Integrated dual recessed PDU channels address a problem of PDUs interfering with 19-in EIA spacing in 23.6 in (600 mm) wide cabinets
- Integrated manifold channels for direct-to-chip liquid cooling application
- Bottom cutout but with integrated cover for manifold hose passthrough
- Two brush-sealed cable openings on the top to support cable trough while improving airflow efficiency
- Configure the extended frame with AI ready Rack or order separately
- X- G=Grey, W=White, B=Black

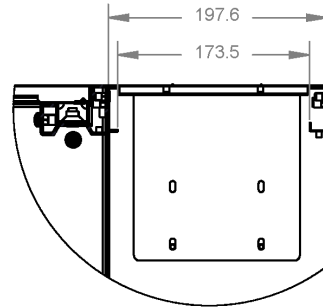


Part Number					Width - in (mm)
Extension Frame	Height				
	42U	45U	48U	52U	
AIA400	-X63	-X66	-X69	-X6C	23.6 (600)
	-X83	-X86	-X89	-X8C	31.5 (800)

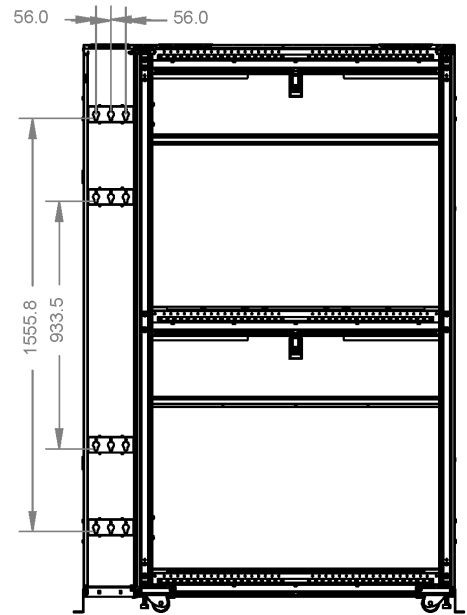
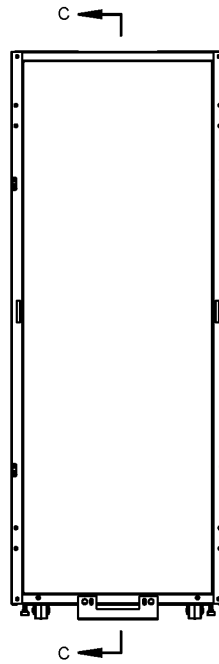
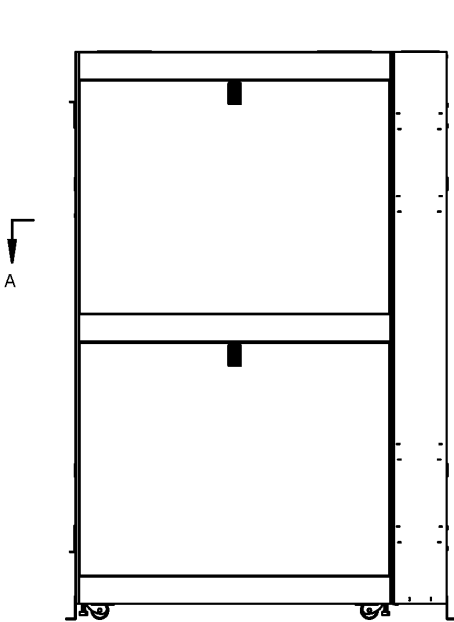




SECTIONAL VIEW A-A



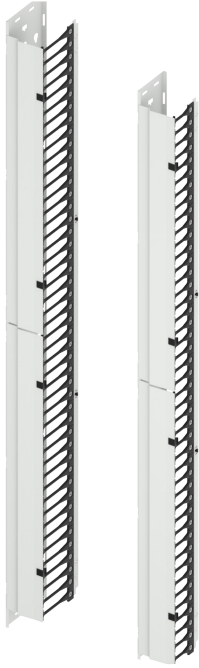
DETAIL B
SCALE 1 : 6



SECTIONAL VIEW C-C



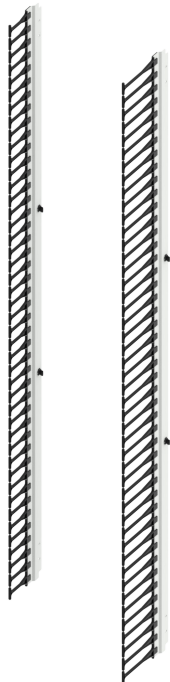
Keep the network cables organized and neat with the following suitable cable management accessories. When installing the cable managers, the Rails need to be set back.



Vertical Cable Manager Pro

- Short or long finger options
- Finger openings are spaced in 1U increments for optimal cable management
- Attach to vertical equipment mounting rails
- Toolless install and removal
- Configure the cable manager with AI Ready Rack 800mm width or order separately
- X- G=Grey, W=White, B=Black

Part Number					Cabinet Width - in (mm)	Finger Length - in (mm)	*Rail Setback - in (mm)
VCM-Pro	Height						
	42U	45U	48U	52U			
AIA1PD	-X83	-X86	-X89	-X8C	31.5 (800)	4.17 (106)	5.5 (139.7)
AIA1PL	-X83	-X86	-X89	-X8C	31.5 (800)	6.65 (169)	8.0 (203.2)



Vertical Cable Manager Light

- Short or long finger options
- Finger openings are spaced in 1U increments for optimal cable management
- Attach to vertical equipment mounting rails
- Toolless install and removal
- Configure the cable manager with AI Ready Rack or order separately
- X- G=Grey, W=White, B=Black

Part Number					Cabinet Width - in (mm)	Finger Length - in (mm)	*Rail Setback - in (mm)
VCM - Light	Height						
	42U	45U	48U	52U			
AIA1LD	-X03	-X06	-X09	-X0C	23.6 (600)/ 31.5 (800)	4.17 (106)	5.0 (127.0)
AIA1LL	-X03	-X06	-X09	-X0C	23.6 (600)/ 31.5 (800)	6.65 (169)	7.5 (190.5)





Vertical Cable Manager Standard

- Attach to the cabinet frame in any corner
- Supports cable bundles and relieves stress on cable terminations
- Can also attach PDU to it
- X- G=Grey, W=White, B=Black

Part Number					Cabinet Width - in (mm)	Lashing Panel Width - in (mm)	*Rail Setback - in (mm)
VCM - Standard	Height						
	42U	45U	48U	52U			
AIA1SD	-X03	-X06	-X09	-X0C	23.6 (600)/ 31.5 (800)	5.65 (143.5)	6.5 (165.1)
AIA1SL	-X03	-X06	-X09	-X0C	23.6 (600)/ 31.5 (800)	8.13 (206.5)	9.0 (228.6)

* Rail Setback is the minimum mounting depth required for each cable manager. The color of the cable management accessories will match the color of the cabinet.



Cable ladder support kit

- Support cable pathway from the top of the AI Ready Rack
- Adjustable from front to rear along tracks/ pathway aligning with openings in the top panel
- Single-tier or two-tier options
- Adjust the pathway height in 1 in increments for cable ladder height

Part Number	Height	Length - in (mm)
AIA1HH-000	12 in	45.87 (1165)
AIA1HS-000	6 in	45.87 (1165)

* Ladder is exclusive.





Horizontal Cable Manager

- Provides horizontal cable management space
- With or without cable passthrough on the backside
- Universal design for any brand 19-inch rack and cabinet
- X- G=Grey, W=White, B=Black

Part Number	Height (U)	Depth - in (mm)	Cutout at the back chassis
INV08-00009X	1	4.53 (115)	No
INV08-00010X	2	4.53 (115)	No
INV08-00011X	3	4.53 (115)	No
INV08-00012X	1	4.53 (115)	Yes
INV08-00013X	2	4.53 (115)	Yes
INV08-00014X	3	4.53 (115)	Yes



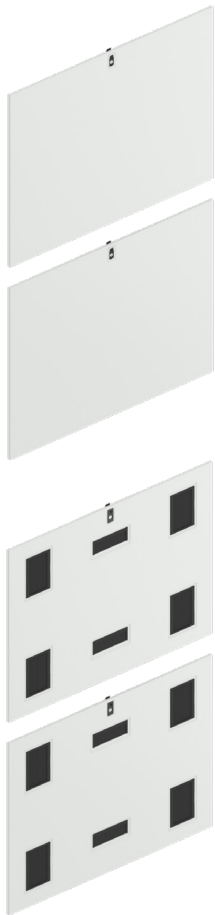
Side Cable Manager

- Provides front-to-rear cable access
- Telescopic adjustment front and rear
[Rail to Rail: 21.0 in (533.4 mm) ~ 31.5 in (800.1 mm)]
- Attaches to rail openings in 31.5 in (800 mm) wide cabinets
- Configure the cable trough with AI Ready Rack or order separately
- X- G=Grey, W=White, B=Black

Part Number	Length Range - in (mm)	Cabinet Width - in (mm)
AIA10T-X80	21.0(533.4) ~ 31.5 (800.1)	31.5 (800)



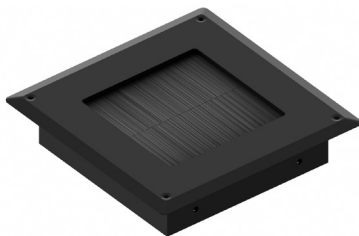
To enhance cooling performance in your facility, it's essential to separate conditioned air from exhaust air, direct conditioned air to equipment, and efficiently extract exhaust air from equipment. Thermal management accessories play a vital role in achieving this by regulating airflow within the cabinet, thus improving overall performance.



Side Panel

- Two-piece solid panels. Individual top/ bottom panels
- Recessed spring-loaded latches with locks, keyed to match doors
- Toolless installation and removal
- Electrically bonds with the cabinet frame when installed
- Panels with brushes are available as configurations
- Available with Grommet or Brush
- X- G=Grey, W=White, B=Black

Part Number							Depth - in (mm)
Solid Panel	W/ Grommet	W/ Brush	Height				
			42U	45U	48U	52U	
AIA20S	AIA20G	AIA20B	-XA3	-XA6	-XA9	-XAC	39.4 (1000)
			-XB3	-XB6	-XB9	-XBC	43.3 (1100)
			-XC3	-XC6	-XC9	-XCC	47.2 (1200)

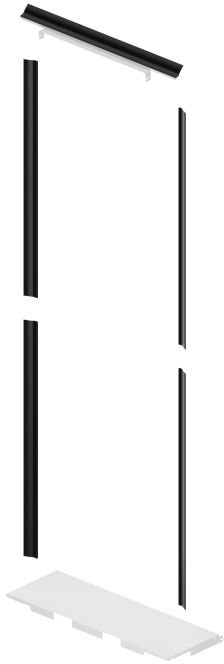


Floor Tile Grommet

- Durable sealing materials
- Effectively prevents dust accumulation
- Facilitates organized routing of cables

Part Number	Height - in (mm)	Width - in (mm)	Thickness - in (mm)	Fire-rating
INV08-PB175175G	6.89 (175)	6.89 (175)	1.5 (38)	UL 94-V2





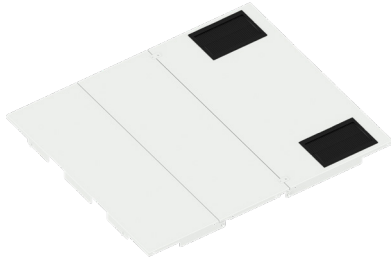
Air Dam Kit

- Blocks airflow around the sides and top of the equipment mounting space
- Maximizes airflow efficiency
- Configure the air dam kit with AI Ready Rack or separately
- X- G=Grey, W=White, B=Black

Part Number					Width - in (mm)
Air Dam Kit	Height				
	42U	45U	48U	52U	
AIA300	-X63	-X66	-X69	-X6C	23.6 (600)
	-X83	-X86	-X89	-X8C	31.5 (800)



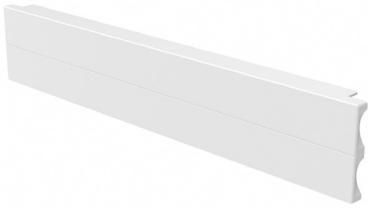
Bottom Panel



- Composed of three solid panels
- Two brush-sealed cable openings on the back conner
- Seals the bottom of the cabinet to improve airflow efficiency
- Configure the bottom panel with AI ready Rack or order separately
- Must be used with the Air Dam Kit to get the front half bottom
- X- G=Grey, W=White, B=Black

Part Number				Width - in (mm)
Bottom Panel	Depth			
	1000mm	1100mm	1200mm	
AIA310	-X6A	-X6B	-X6C	23.6 (600)
	-X8A	-X8B	-X8C	31.5 (800)

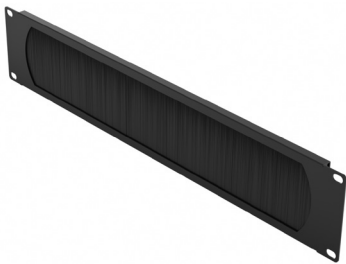




Blanking Panel

- Engineered from high-quality, rigid plastic
- Toolless snap-in design makes installation quick and easy
- Universal usage fits with any brand cabinet that is 19-in and EIA-310E conformance
- X- W=White, B=Black

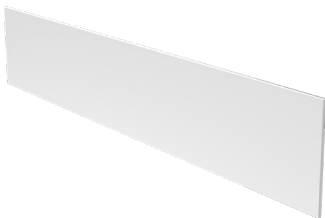
Part Number	Height (U)	Cabinet Width - in (mm)	Fire-rating
INV08-00002X	1	23.6 (600)/ 31.5 (800)	UL 94-V0
INV08-00003X	2	23.6 (600)/ 31.5 (800)	UL 94-V0



Brush Blanking Panel

- Engineered from high-quality, solid metal and UL 94-V0 bristle
- Universal usage fit with any brand cabinet that is 19-inch and EIA-310E conformance
- Bristle area allows cables to pass through it Pack with installation hardwares

Part Number	Height (U)	Cabinet Width - in (mm)
INV08-00005B	1	23.6 (600) / 31.5 (800)
INV08-00006B	2	23.6 (600) / 31.5 (800)



Vent Skirt

- Engineered from high-quality, rigid plastic, also UL 94-V0 fire rating
- The installation of toolless magnets makes it quick and easy
- Fit with Inova cabinet
- Can customize to match with different size of cabinets
- X- W=White, B=Black

Part Number	Height	Width - in (mm)	Fire-rating
INV08-00007X	100 mm	23.58 (599)	UL 94-V0
INV08-00008X	100 mm	31.46 (799)	UL 94-V0





Choose Us, Choose More Options

Opting for Inova's AI Ready Rack ensures you're partnering with a provider focused on versatile solutions for your data center requirements. Enjoy flexible configurations, resilient construction, expansive internal usable space, variety of cable management options, and efficient airflow management. Partner with us for a smarter, greener future.

Cabinet Warranty-5 Years.

For inquiries and consultation, contact sales@inovadc.com.