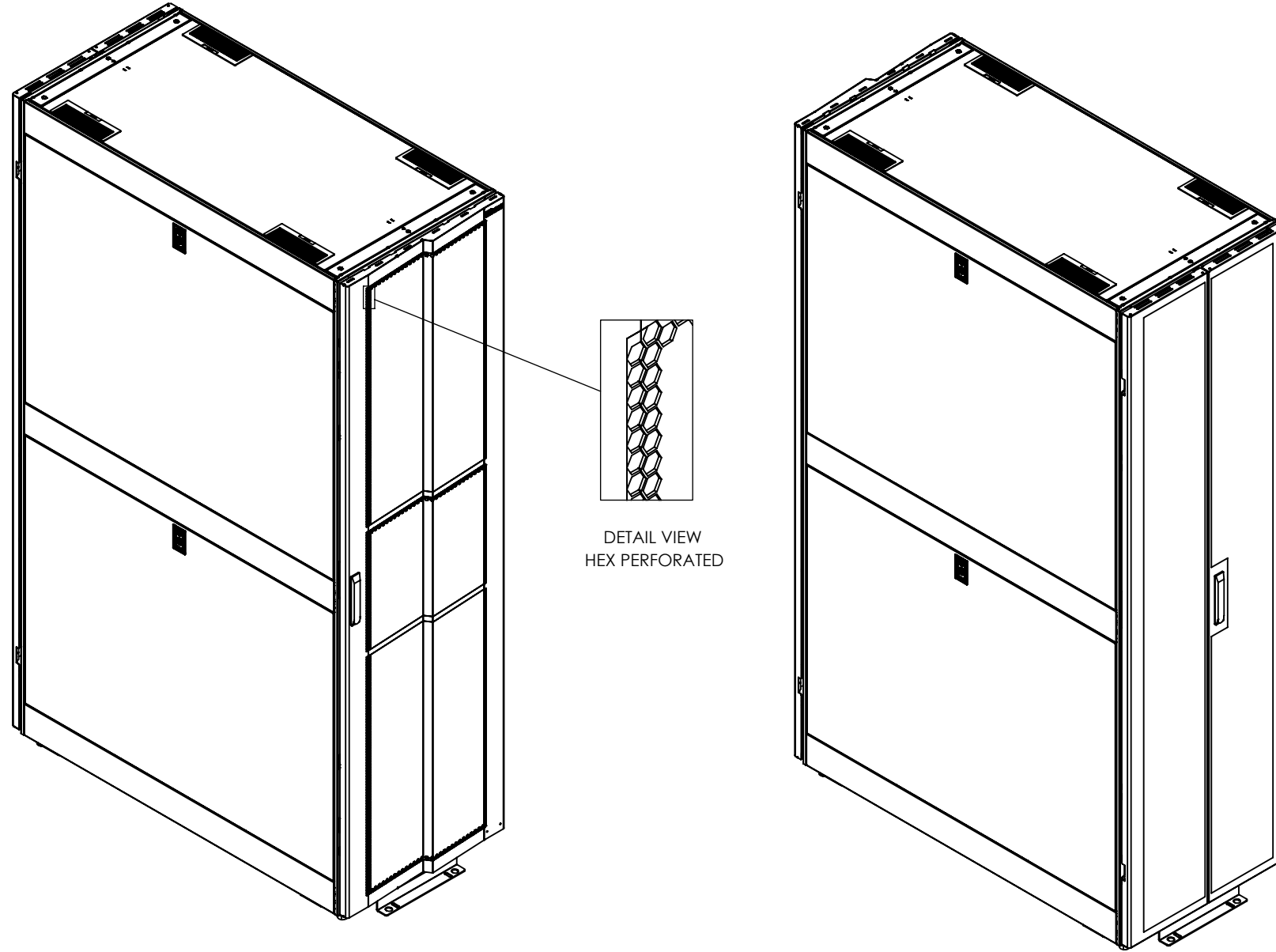


NOTES:

REVISIONS			
REV.	DESCRIPTION	DATE	APPROVED
2	FULL RELEASED	2024/5/7	CT



DETAIL VIEW
HEX PERFORATED

PROPRIETARY AND CONFIDENTIAL

THIS DRAWING AND ITS SPECIFICATIONS ARE THE PROPERTY OF INOVA AND SHALL NOT BE COPIED, REPRODUCED, OR USED IN WHOLE OR IN PART, AS THE BASIS FOR THE MANUFACTURE OR SALE OF ITEMS WITHOUT THE WRITTEN PERMISSION FROM INOVA. THIS DRAWING IS BASED UPON THE LATEST AVAILABLE INFORMATION AND IS SUBJECT TO CHANGE WITHOUT NOTICE.

UNLESS OTHERWISE SPECIFIED

X = ± 1
 X.X = ± 0.5
 X.XX = ± 0.30
 X.XXX = ± 0.130
 ANGULAR
 X = 1°
 .X = 0.5°
 .XX = 0.25°



INTERPRET TO ASME Y14.100

DESCRIPTION:
 AI READY RACK TECHNICAL
 DRAWING - 23.6" (600 MM) WIDTH

MATERIAL:
 SEE INDIVIDUAL

FINISH:
 N/A

DEBURR AND BREAK SHARP
 EDGES/CONTOURS AT 0.2mm MAX

CLASS: N/A

DRAWING NO:
**AIR6XX-
 XXXXXXXXXXXXX**

REV NO:
2

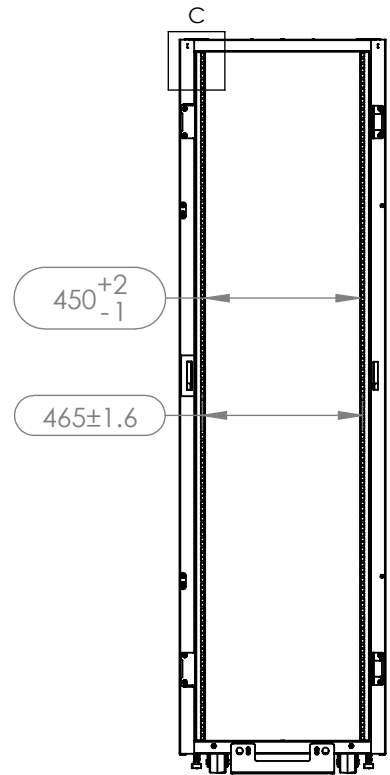
SIZE:
 B

NAME	DATE	COMMENTS:
DRAWN BY: AMY ZHU	2024.5.7	
APP. BY: AMY ZHU	2024.5.7	

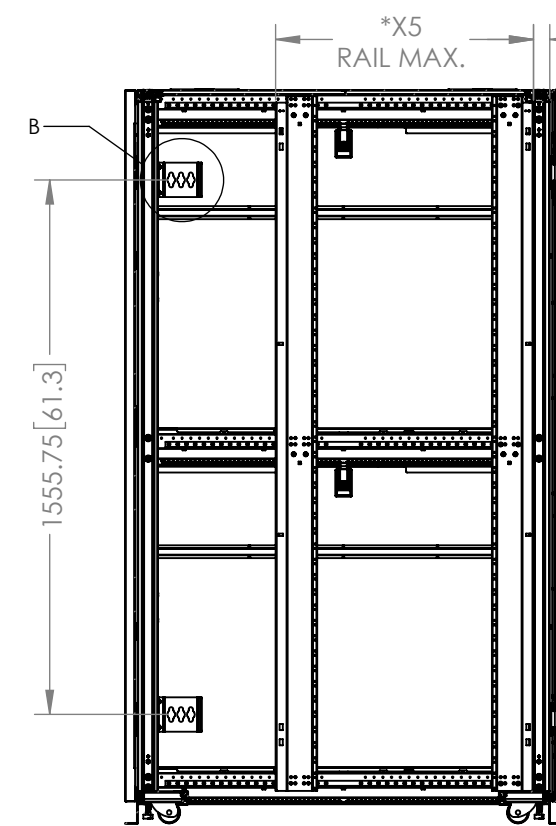
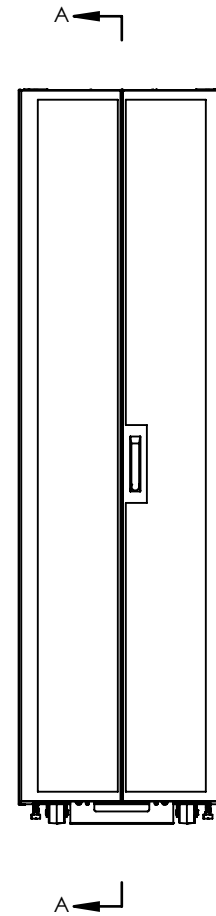
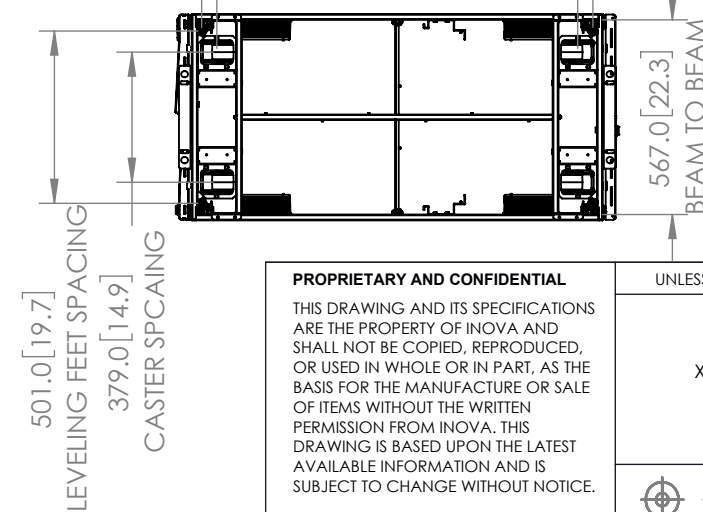
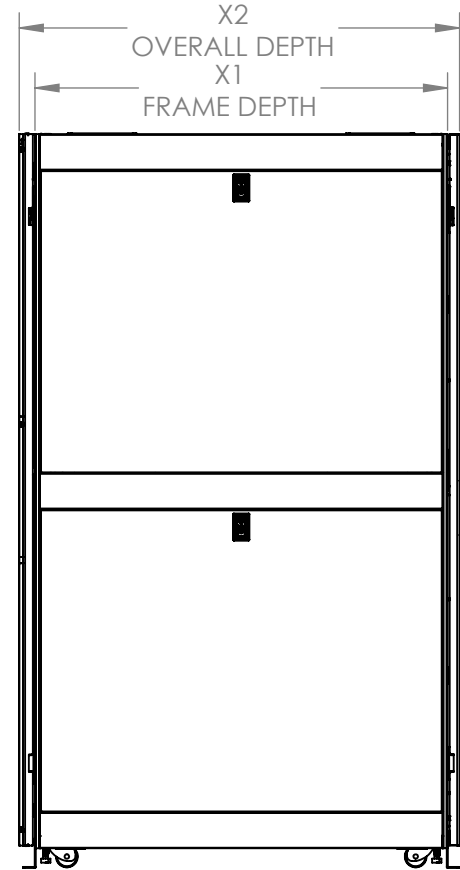
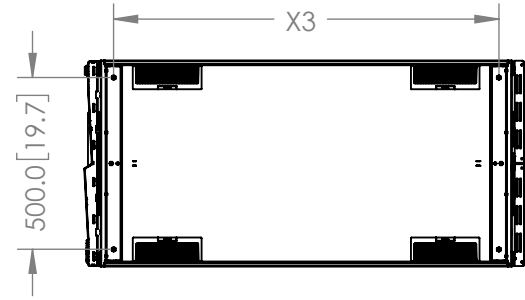
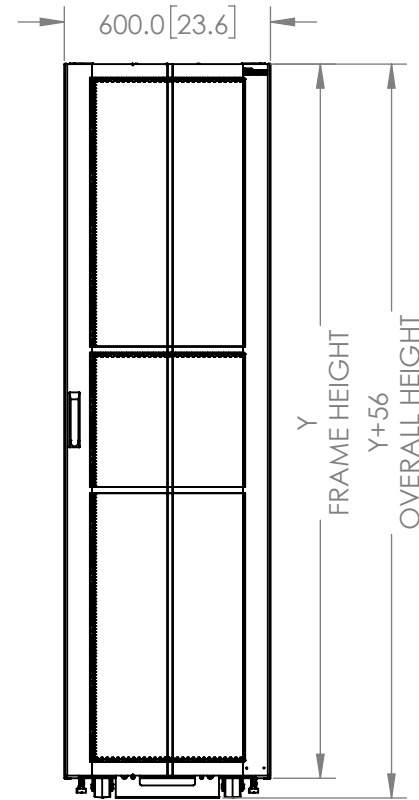
SCALE: 1:16 WEIGHT: SHEET: 1 OF 3

- NOTES:
1. THE DISTANCE OF *X5 IS 750MM [29.5] BY DEFAULT.
 2. AT THE RAIL MAX., 2 PDUs CAN BE INSTALLED ON ONE SIDE.

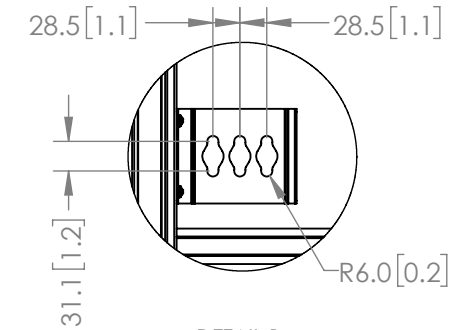
PN	X1	X2	X3	X4	*X5	Y
AIR6A3	1000 [39.37]	1071 [42.2]	921 [36.3]	850 [33.5]	30.0 [762.0]	76.6 [1945]
AIR6A6	1000 [39.37]	1071 [42.2]	921 [36.3]	850 [33.5]	30.0 [762.0]	81.9 [2079]
AIR6A9	1000 [39.37]	1071 [42.2]	921 [36.3]	850 [33.5]	30.0 [762.0]	87.1 [2212]
AIR6AC	1000 [39.37]	1071 [42.2]	921 [36.3]	850 [33.5]	30.0 [762.0]	94.1 [2390]
AIR6B3	1100 [43.31]	1171 [46.1]	1021 [40.2]	950 [37.4]	34.0 [863.6]	76.6 [1945]
AIR6B6	1100 [43.31]	1171 [46.1]	1021 [40.2]	950 [37.4]	34.0 [863.6]	81.9 [2079]
AIR6B9	1100 [43.31]	1171 [46.1]	1021 [40.2]	950 [37.4]	34.0 [863.6]	87.1 [2212]
AIR6BC	1100 [43.31]	1171 [46.1]	1021 [40.2]	950 [37.4]	34.0 [863.6]	94.1 [2390]
AIR6C3	1200 [47.24]	1271 [50.0]	1121 [44.1]	1050 [41.3]	38.0 [965.2]	76.6 [1945]
AIR6C6	1200 [47.24]	1271 [50.0]	1121 [44.1]	1050 [41.3]	38.0 [965.2]	81.9 [2079]
AIR6C9	1200 [47.24]	1271 [50.0]	1121 [44.1]	1050 [41.3]	38.0 [965.2]	87.1 [2212]
AIR6CC	1200 [47.24]	1271 [50.0]	1121 [44.1]	1050 [41.3]	38.0 [965.2]	94.1 [2390]



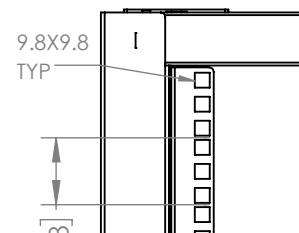
FRONT VIEW
(WITHOUT DOORS)



SECTIONAL VIEW A-A
SCALE 1 : 22



DETAIL B
SCALE 1 : 8



DETAIL C
SCALE 1 : 5

PROPRIETARY AND CONFIDENTIAL

THIS DRAWING AND ITS SPECIFICATIONS ARE THE PROPERTY OF INOVA AND SHALL NOT BE COPIED, REPRODUCED, OR USED IN WHOLE OR IN PART, AS THE BASIS FOR THE MANUFACTURE OR SALE OF ITEMS WITHOUT THE WRITTEN PERMISSION FROM INOVA. THIS DRAWING IS BASED UPON THE LATEST AVAILABLE INFORMATION AND IS SUBJECT TO CHANGE WITHOUT NOTICE.

UNLESS OTHERWISE SPECIFIED

- X = ± 1
- X.X = ± 0.5
- X.XX = ± 0.30
- X.XXX = ± 0.130
- ANGULAR
- X = 1°
- .X = 0.5°
- .XX = 0.25°



UNITS: mm [in]



INTERPRET TO ASME Y14.100

DESCRIPTION:
AI READY RACK TECHNICAL
DRAWING - 23.6" (600 MM) WIDTH

MATERIAL:
SEE INDIVIDUAL

FINISH:
N/A

DEBURR AND BREAK SHARP
EDGES/CONTOURS AT 0.2mm MAX

CLASS: N/A

DRAWING NO:

AIR6XX-
XXXXXXXXXXXX

REV NO:

2

SIZE:
B

NAME DATE COMMENTS:

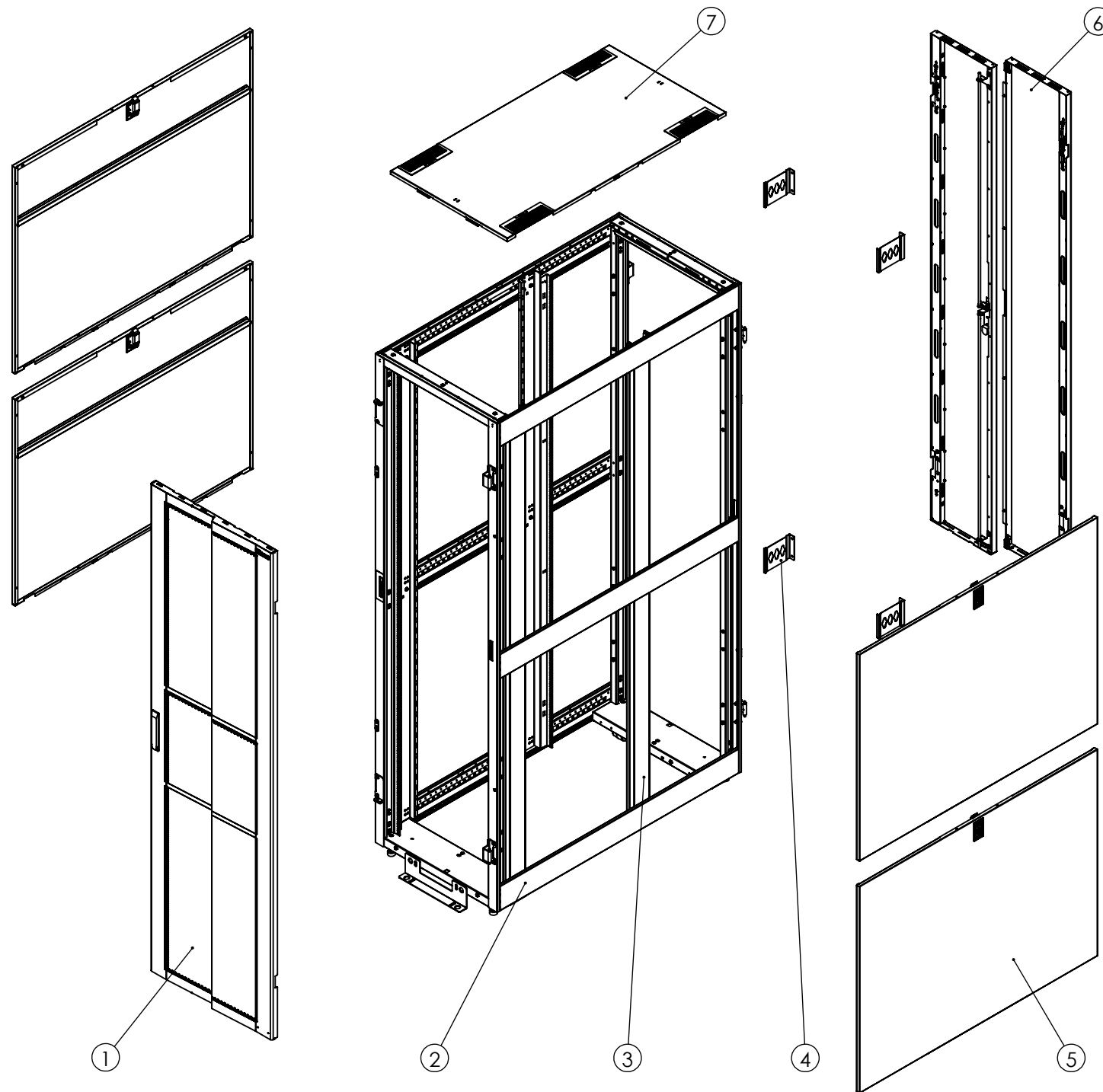
DRAWN BY AMY ZHU 2024.5.7

APP. BY AMY ZHU 2024.5.7

SCALE: 1:22 WEIGHT:

SHEET: 2 OF 3

NOTES:



ITEM.	DES.
1	SINGLE PERF FRONT DOOR, 1PC
2	FRAME KIT, INCLUDING 1 PC FRONT FRAME, 1 PC REAR FRAME AND 6 PCS BEAMS
3	MOUNTING RAIL KIT, INCLUDING 2 LEFT AND 2 RIGHT
4	PDU SHORT BRACKET, 4 PCS
5	SIDE PANEL, 4 PCS
6	SPLIT PERF REAR DOORS, 1 PC
7	FULL-DEPTH BRUSH-SEALED TOP PANEL, 1 PC
8	KEYS
9	CLOTH BAG (50 SETS OF CAGE NUTS)

PROPRIETARY AND CONFIDENTIAL
 THIS DRAWING AND ITS SPECIFICATIONS ARE THE PROPERTY OF INOVA AND SHALL NOT BE COPIED, REPRODUCED, OR USED IN WHOLE OR IN PART, AS THE BASIS FOR THE MANUFACTURE OR SALE OF ITEMS WITHOUT THE WRITTEN PERMISSION FROM INOVA. THIS DRAWING IS BASED UPON THE LATEST AVAILABLE INFORMATION AND IS SUBJECT TO CHANGE WITHOUT NOTICE.

UNLESS OTHERWISE SPECIFIED
 X = ± 1
 X.X = ± 0.5
 X.XX = ± 0.30
 X.XXX = ± 0.130
 ANGULAR
 X = 1°
 .X = 0.5°
 .XX = 0.25°



DESCRIPTION:
AI READY RACK TECHNICAL DRAWING - 23.6" (600 MM) WIDTH

MATERIAL: SEE INDIVIDUAL FINISH: N/A

DEBURR AND BREAK SHARP EDGES/CONTOURS AT 0.2mm MAX CLASS: N/A

DRAWING NO: AIR6XX-XXXXXXXXXXXX		REV NO: 2
NAME	DATE	COMMENTS:
DRAWN BY AMY ZHU	2024.5.7	
APP. BY AMY ZHU	2024.5.7	
SCALE: 1:50	WEIGHT:	SHEET: 3 OF 3

UNITS: mm [in]

INTERPRET TO ASME Y14.100