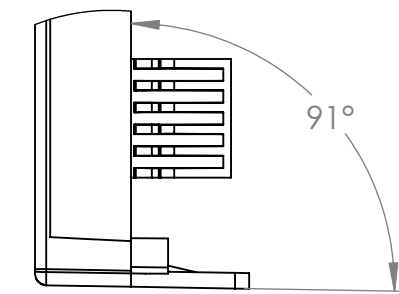
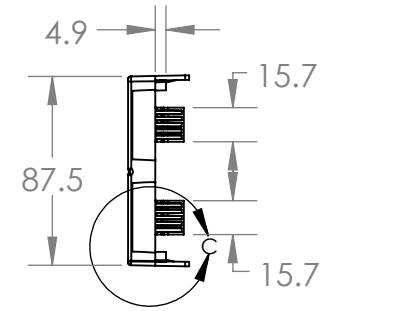
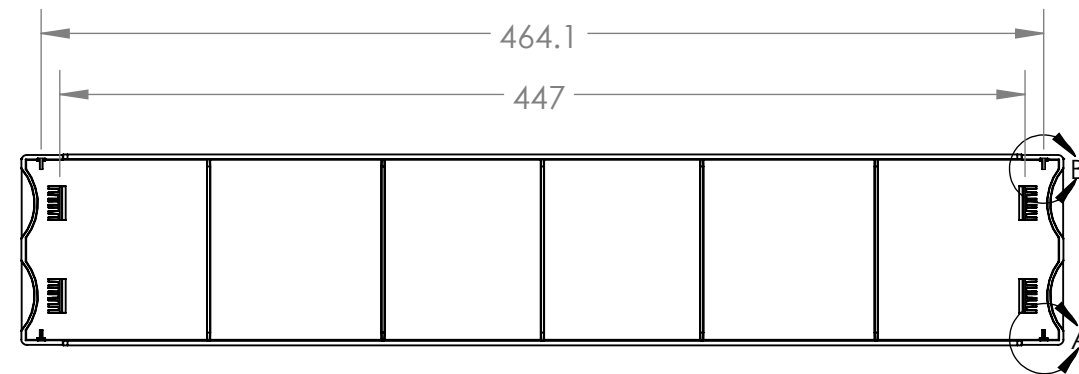
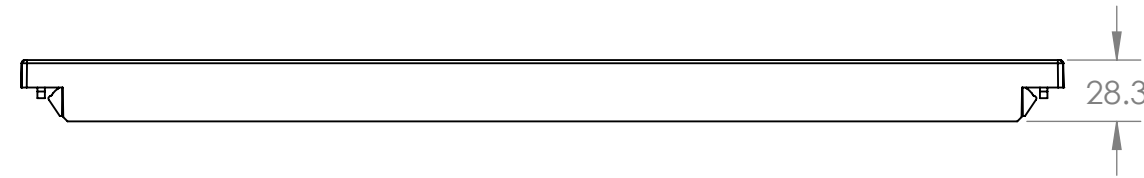
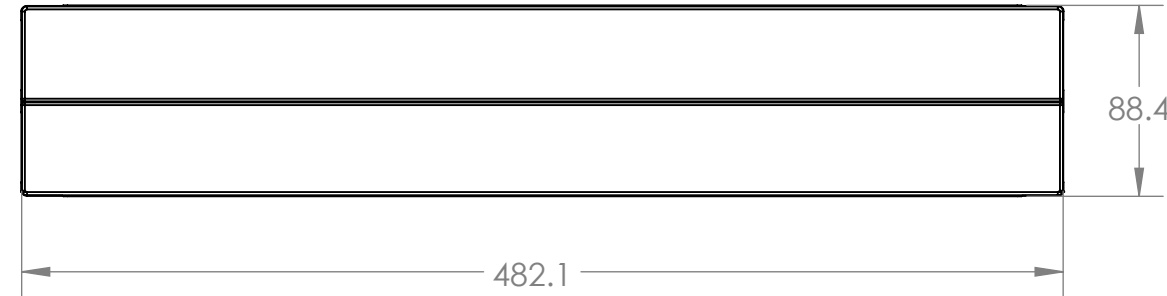
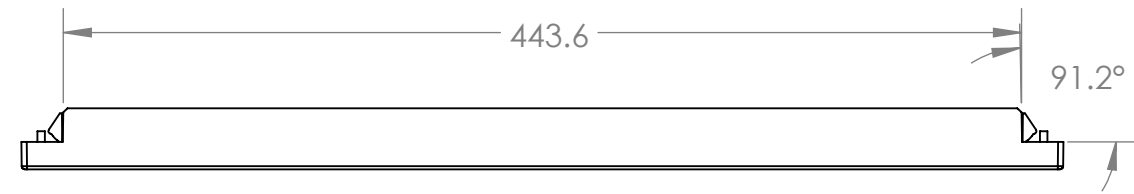
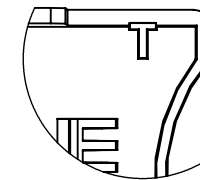


NOTES:

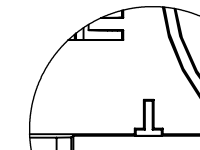
REVISIONS			
REV.	DESCRIPTION	DATE	APPROVED
A	FULL RELEASED	2023/11/29	CT



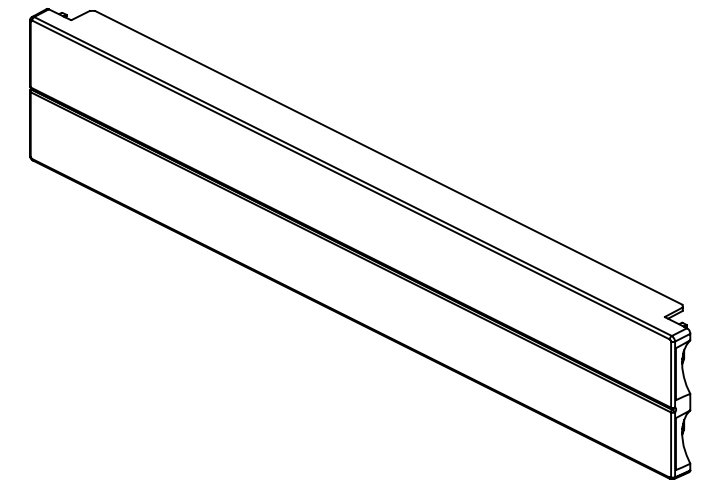
DETAIL C
SCALE 1 : 1



DETAIL B
SCALE 1 : 1



DETAIL A
SCALE 1 : 1



PROPRIETARY AND CONFIDENTIAL
THIS DRAWING AND ITS SPECIFICATIONS ARE THE PROPERTY OF INOVA AND SHALL NOT BE COPIED, REPRODUCED, OR USED IN WHOLE OR IN PART, AS THE BASIS FOR THE MANUFACTURE OR SALE OF ITEMS WITHOUT THE WRITTEN PERMISSION FROM INOVA. THIS DRAWING IS BASED UPON THE LATEST AVAILABLE INFORMATION AND IS SUBJECT TO CHANGE WITHOUT NOTICE.

UNLESS OTHERWISE SPECIFIED
X = ± 1
X.X = ± 0.5
X.XX = ± 0.30
X.XXX = ± 0.130
ANGULAR
X = 1°
.X = 0.5°
.XX = 0.25°

UNITS: mm [in]



INTERPRET TO ASME Y14.100

DESCRIPTION:
CABINET ACCESSORY, 19" 2U
BLANKING PANEL, BLACK, UL94-V0

MATERIAL: ABS, UL94-V0
FINISH: COLOR: BLACK

DEBURR AND BREAK SHARP EDGES/CONTOURS AT 0.2mm MAX

DRAWING NO:
INV08-00004B

NAME	DATE	COMMENTS
DRAWN BY: AMY ZHU	2023/11/29	
APP. BY: SAM DING	2023/11/29	

SCALE: 1:3.5
WEIGHT:

REV NO:
A
SIZE:
B

SHEET: 1 OF 1