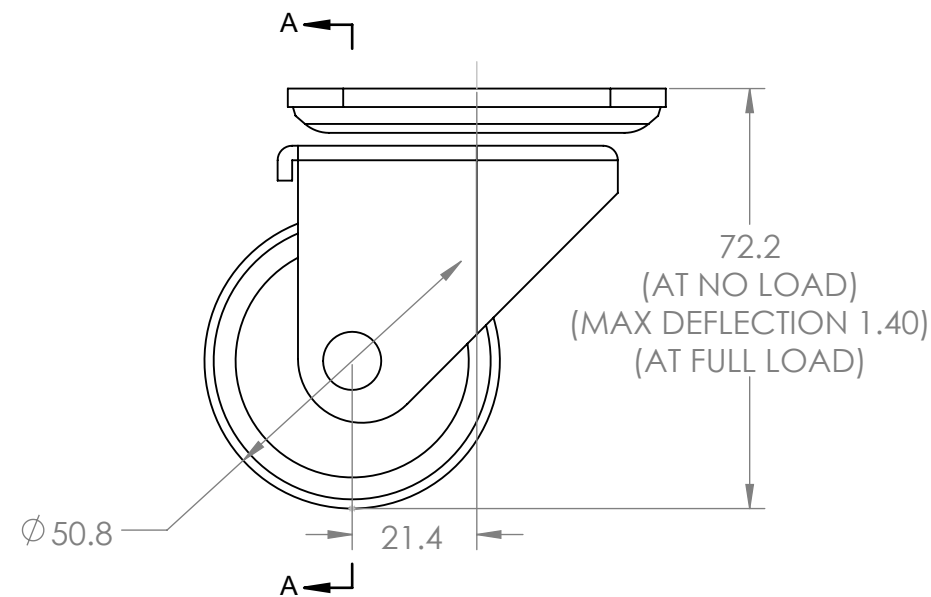
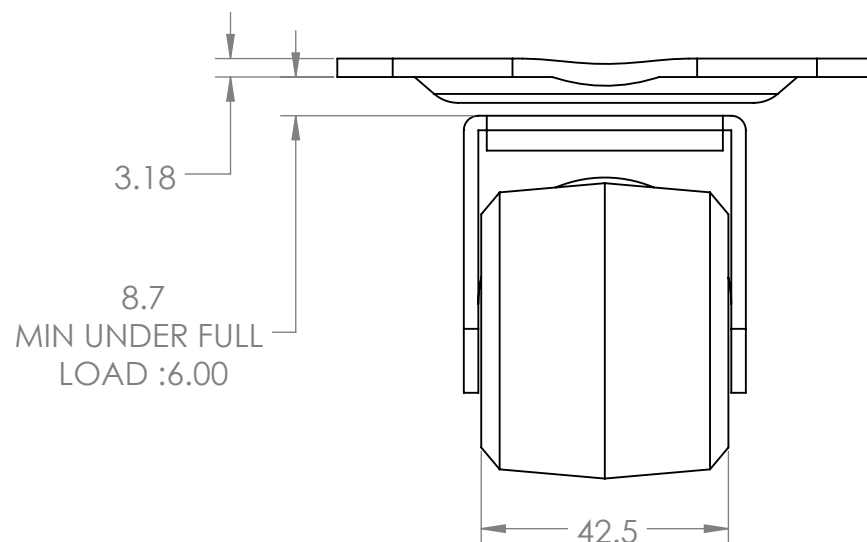
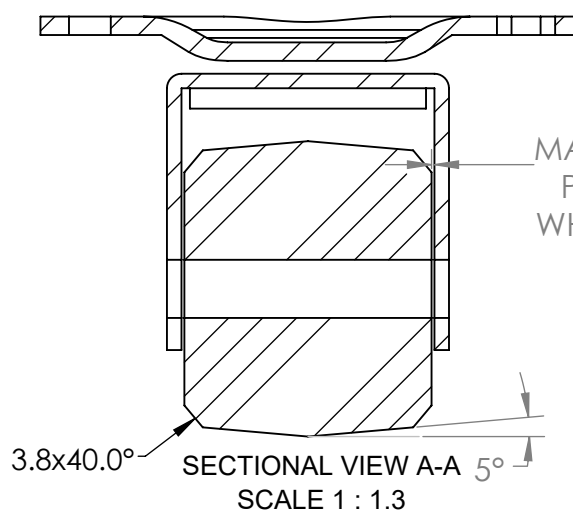
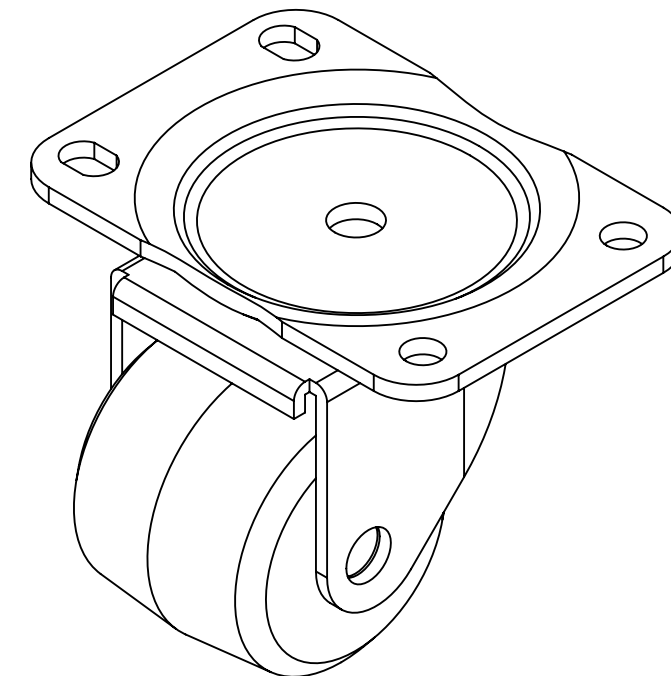
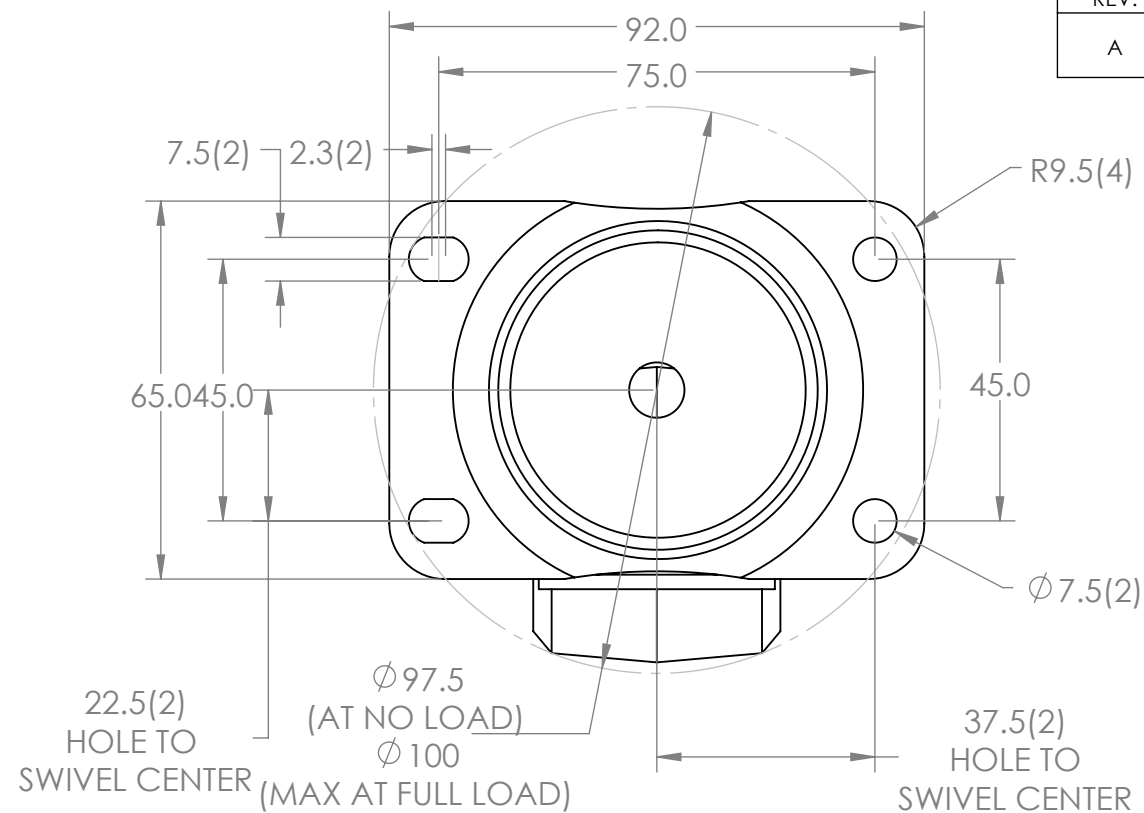


NOTES:

- MATERIAL: DEVIATION FROM THE FOLLOWING MATERIALS:  
 HORN, SHAFT TOP PLATE & RETAINER: ASTM 4130 STEEL OR EQUIVALENT APPROVED;  
 WHEEL: 65-2 GLASS-FILLED POLYPROPYLENE;  
 SWIVEL BEARING: BALL BEARINGS;  
 WHEEL BEARING: DELRON SLEEVE OR NEEDLE ROLLER BEARING.
- FINISH:  
 WHEEL: BLACK;  
 ALL OTHER: TYPE III ELECTRODEPOSITED ZINC PLATE PER ASTM-B633 W/ CLASS 3 CLEAR TRIVALENT CHROMATE COATING PER AMS-C-5541

REVISIONS			
REV.	DESCRIPTION	DATE	APPROVED
A	FULL RELEASED	2023/11/30	CT



ACCESSORY BAG			
ITEM	PN	DES.	QTY.
1	2F1-FN06	HEX FLANGE LOCKNUT M6, WHITE ZINC	16

**PROPRIETARY AND CONFIDENTIAL**  
 THIS DRAWING AND ITS SPECIFICATIONS ARE THE PROPERTY OF INOVA AND SHALL NOT BE COPIED, REPRODUCED, OR USED IN WHOLE OR IN PART, AS THE BASIS FOR THE MANUFACTURE OR SALE OF ITEMS WITHOUT THE WRITTEN PERMISSION FROM INOVA. THIS DRAWING IS BASED UPON THE LATEST AVAILABLE INFORMATION AND IS SUBJECT TO CHANGE WITHOUT NOTICE.

UNLESS OTHERWISE SPECIFIED

X = ± 1  
 X.X = ± 0.5  
 X.XX = ± 0.30  
 X.XXX = ± 0.130  
 ANGULAR  
 X = 1°  
 .X = 0.5°  
 .XX = 0.25°

UNITS: mm [in]



DESCRIPTION:  
 CABINET ACCESSORY, 2" CASTOR, 4 PCS PER SET

MATERIAL:  
 SEE NOTE

FINISH:  
 SEE NOTE

DEBURR AND BREAK SHARP EDGES/CONTOURS AT 0.2mm MAX

CLASS: N/A

DRAWING NO:  
 INV08-00015

REV NO:  
 A

SIZE:  
 B

NAME	DATE	COMMENTS:
DRAWN BY: AMY ZHU	2023/11/30	
APP. BY: SAM DING	2023/11/30	

SCALE: 1:2

WEIGHT:

SHEET: 1 OF 1

INTERPRET TO ASME Y14.100