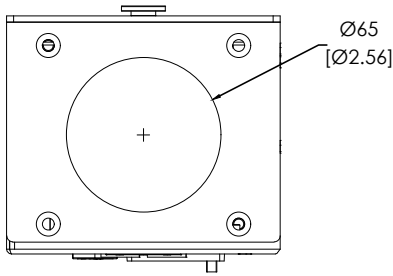
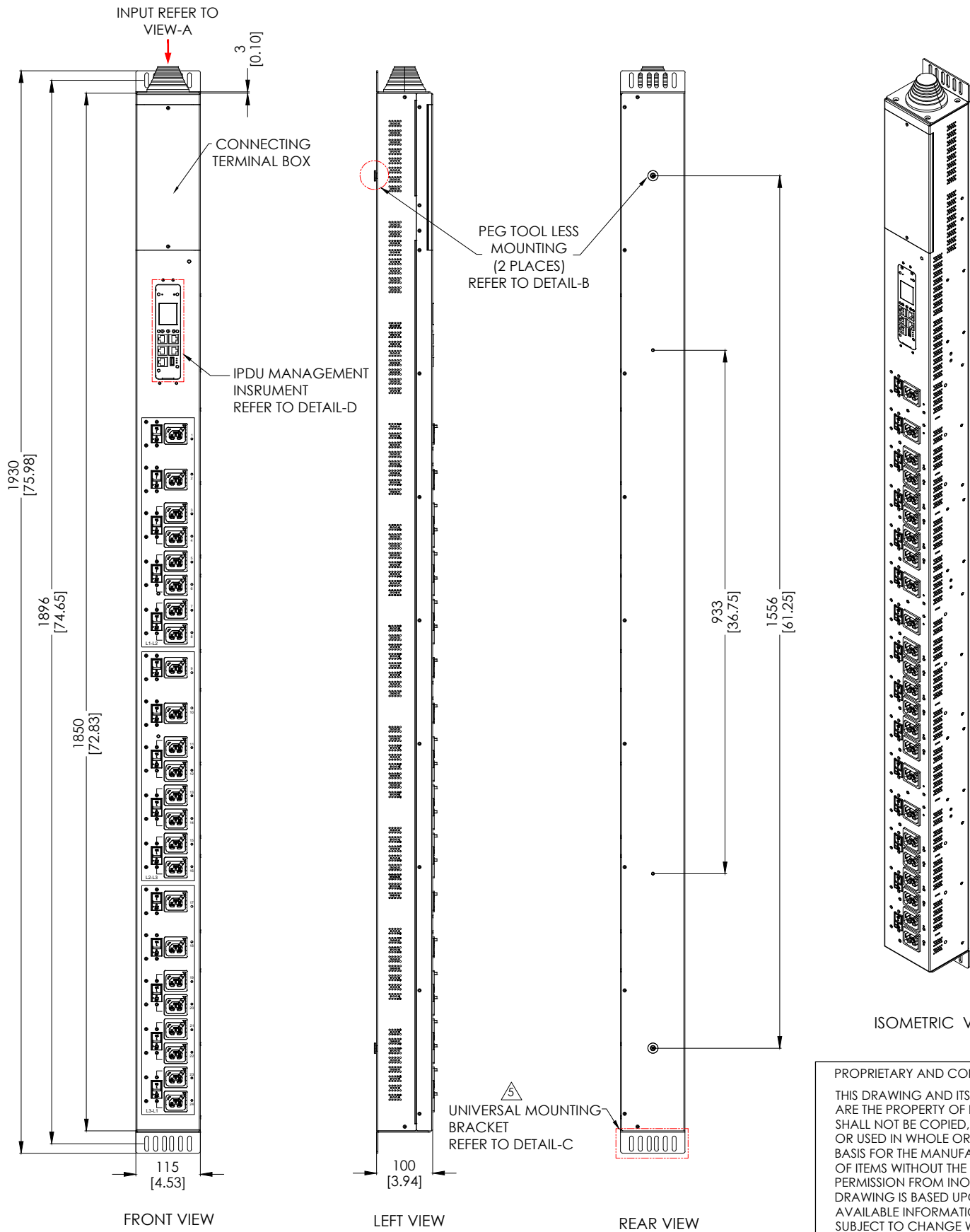
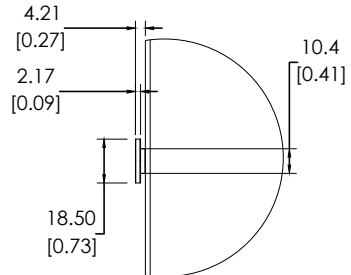


NOTES:

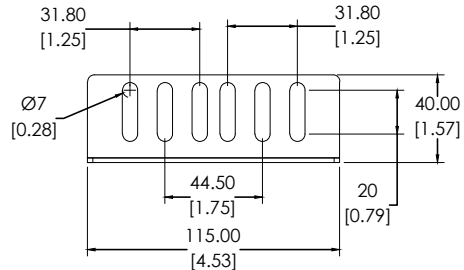
1. INSTALLATION SHALL COMPLY WITH ALL APPLICABLE NATIONAL, STATE AND LOCAL ELECTRICAL CODES.  
2. REFER TO PRODUCT DOCUMENTATION FOR ADDITIONAL DETAILS PRIOR TO INSTALLATION AND PREPARATION WORK.  
3. UNLESS OTHERWISE SPECIFIED, ALL DIMENSIONS ARE IN MILLIMETERS [INCHES].  
4. NET WEIGHT OF UNIT IS 18 kg [39.68 lb].  
5. THE BRACKET IS MOUNTED ON THE HOUSING.



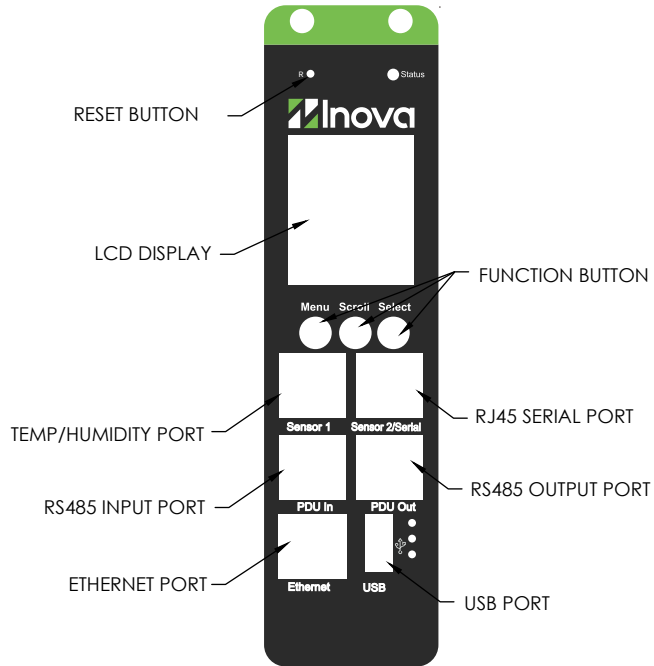
VIEW A  
ENLARGED VIEW



DETAIL B  
PEG TOOLLESS MOUNTING  
ENLARGED VIEW



DETAIL C  
UNIVERSAL MOUNTING BRACKET  
ENLARGED VIEW



DETAIL D  
IPDU MANAGEMENT INSTRUMENT  
ENLARGED VIEW

PROPRIETARY AND CONFIDENTIAL  
THIS DRAWING AND ITS SPECIFICATIONS ARE THE PROPERTY OF INOVA AND SHALL NOT BE COPIED, REPRODUCED, OR USED IN WHOLE OR IN PART, AS THE BASIS FOR THE MANUFACTURE OR SALE OF ITEMS WITHOUT THE WRITTEN PERMISSION FROM INOVA. THIS DRAWING IS BASED UPON THE LATEST AVAILABLE INFORMATION AND IS SUBJECT TO CHANGE WITHOUT NOTICE.

UNLESS OTHERWISE SPECIFIED  
X = ± 1  
X.X = ± 0.5  
X.XX = ± 0.30  
X.XXX = ± 0.130  
ANGULAR  
X = 1°  
.X = 0.5°  
.XX = 0.25°



UNITS: mm [in]



INTERPRET TO ASME Y14.100

DESCRIPTION:  
208V delta 3PH Hard Wire Input, 24pcs locking C39, 15pcs CB, power consumption 45KW, Metered and Switch per Outlet, Black, Grey, White alternative outlets layout, Black Chassis.

MATERIAL: N/A  
FINISH: N/A

DEBURR AND BREAK SHARP EDGES/CONTOURS AT 0.2mm MAX

CLASS: N/A

DRAWING NO:  
MSP0125AD3PHC39X24

NAME  
DATE  
DRAWN BY: AMY ZHU  
APP. BY: JOHAN ZUO

SCALE: N/A  
WEIGHT:

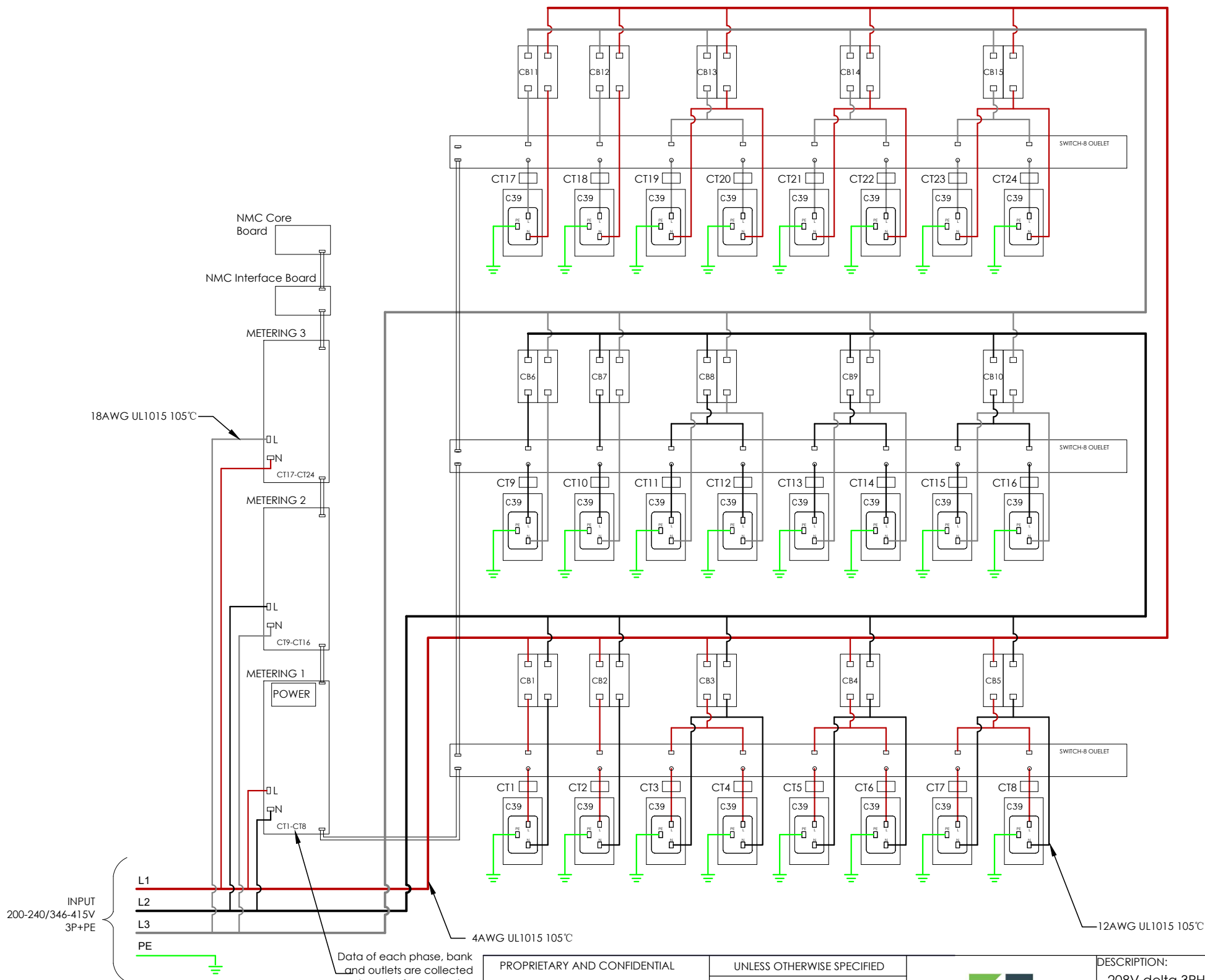
REV NO:  
A  
SIZE: B

COMMENTS:

SHEET: 1 OF 2

NOTES:

1. INSTALLATION SHALL COMPLY WITH ALL APPLICABLE NATIONAL, STATE AND LOCAL ELECTRICAL CODES.
2. REFER TO PRODUCT DOCUMENTATION FOR ADDITIONAL DETAILS PRIOR TO INSTALLATION AND PREPARATION WORK.
3. THIS DRAWING DEPICTS THE POWER SYSTEM CONNECTIONS AND IS NOT REPRESENTATIVE OF THE PHYSICAL LAYOUT. PLEASE REFER TO MECHANICAL DRAWINGS FOR PHYSICAL LAYOUT.



PROPRIETARY AND CONFIDENTIAL  
THIS DRAWING AND ITS SPECIFICATIONS ARE THE PROPERTY OF INOVA AND SHALL NOT BE COPIED, REPRODUCED, OR USED IN WHOLE OR IN PART, AS THE BASIS FOR THE MANUFACTURE OR SALE OF ITEMS WITHOUT THE WRITTEN PERMISSION FROM INOVA. THIS DRAWING IS BASED UPON THE LATEST AVAILABLE INFORMATION AND IS SUBJECT TO CHANGE WITHOUT NOTICE.

UNLESS OTHERWISE SPECIFIED

X = ± 1  
X.X = ± 0.5  
X.XX = ± 0.30  
X.XXX = ± 0.130  
ANGULAR  
X = 1°  
.X = 0.5°  
.XX = 0.25°



INTERPRET TO ASME Y14.100

DESCRIPTION:

208V delta 3PH Hard Wire Input, 24pcs locking C39, 15pcs CB, power consumption 45KW, Metered and Switch per Outlet, Black, Grey, White alternative outlets layout. Black Chassis.

MATERIAL:

N/A

FINISH:

N/A

DEBURR AND BREAK SHARP EDGES/CONTOURS AT 0.2mm MAX

CLASS: N/A

DRAWING NO:

MSP0125AD3PHC39X24

REV NO:

A

SIZE: B

	NAME	DATE	COMMENTS:
DRAWN BY	AMY ZHU	2025/3/13	
APP. BY	JOHAN ZUO	2025/3/13	

SCALE: N/A WEIGHT: SHEET: 2 OF 2